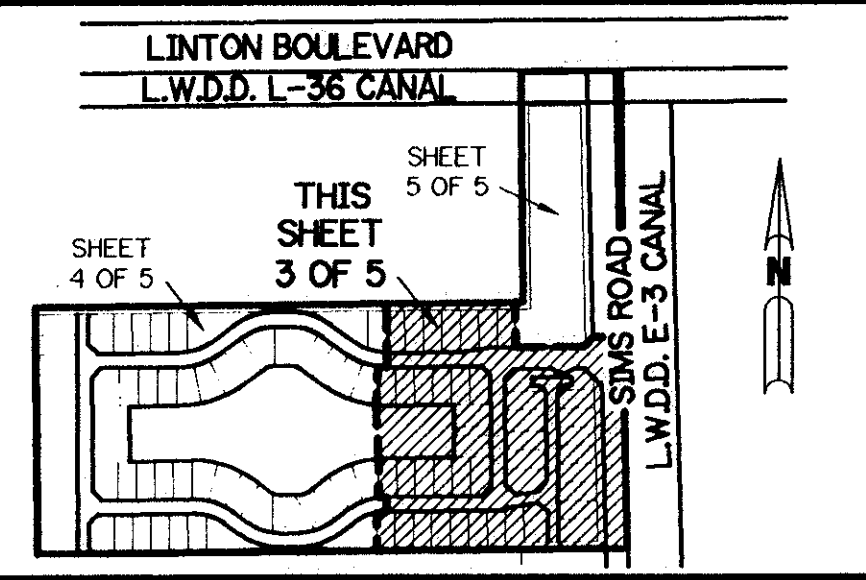


ADDISON TRACE P.U.D.

A PART OF THE LINTON P.U.D.
A PARCEL OF LAND LYING IN SECTION 26,
TOWNSHIP 46 SOUTH, RANGE 42 EAST,
PALM BEACH COUNTY, FLORIDA.

SHEET 3 OF 5 NOVEMBER, 1996

NOTE:
COORDINATES SHOWN ARE GRID COORDINATES
DATUM = NAD 83 (1990 ADJUSTMENT)
ZONE = FLORIDA EAST ZONE
LINEAR UNIT = U.S. SURVEY FEET
COORDINATE SYSTEM 1983 STATE PLANE
TRANSVERSE MERCATOR PROJECTION
ALL DISTANCES ARE GROUND
SCALE FACTOR = 1.000034
PLAT BEARING = GRID BEARING (NO ROTATION)

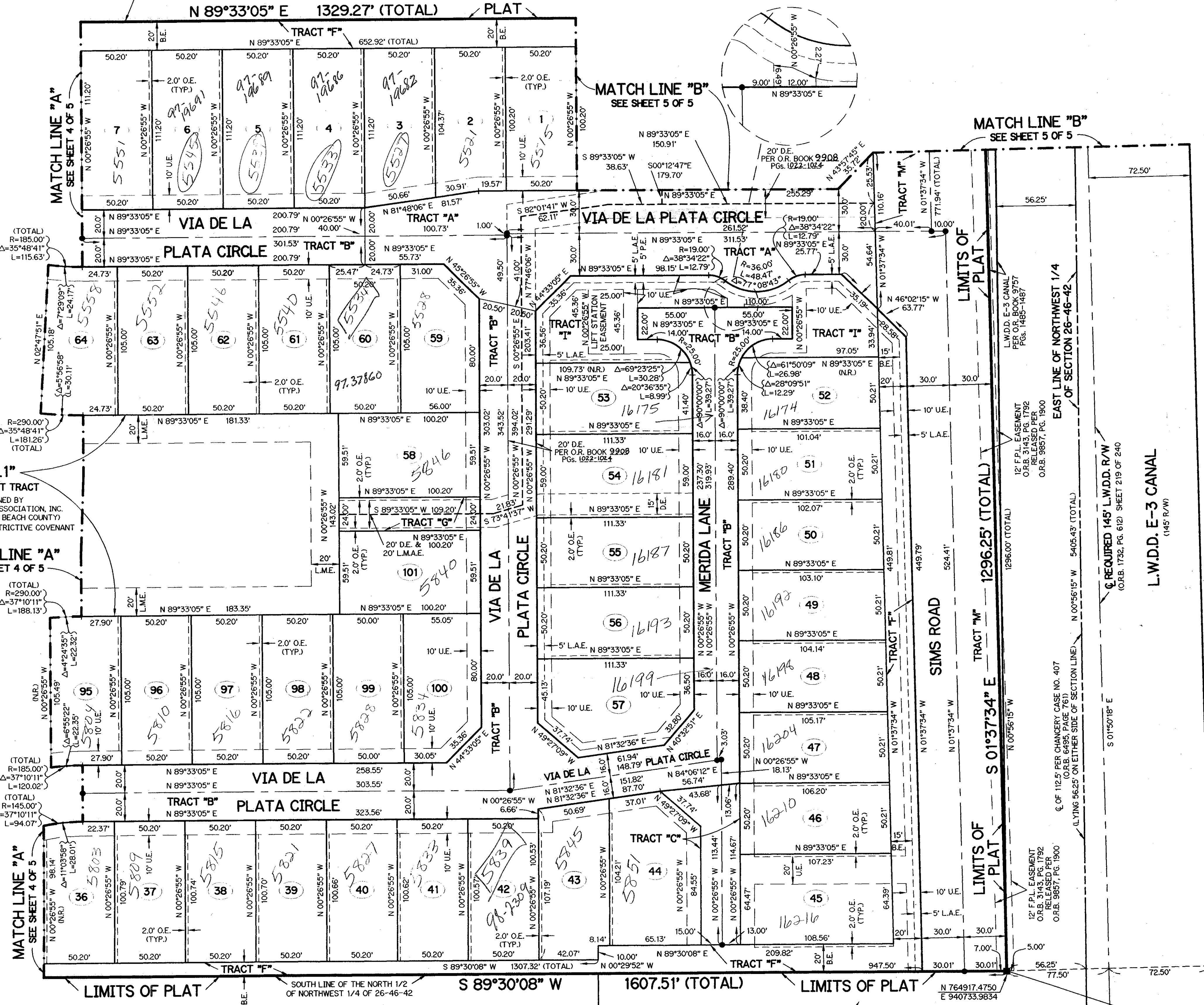


KEY MAP
N.T.S.

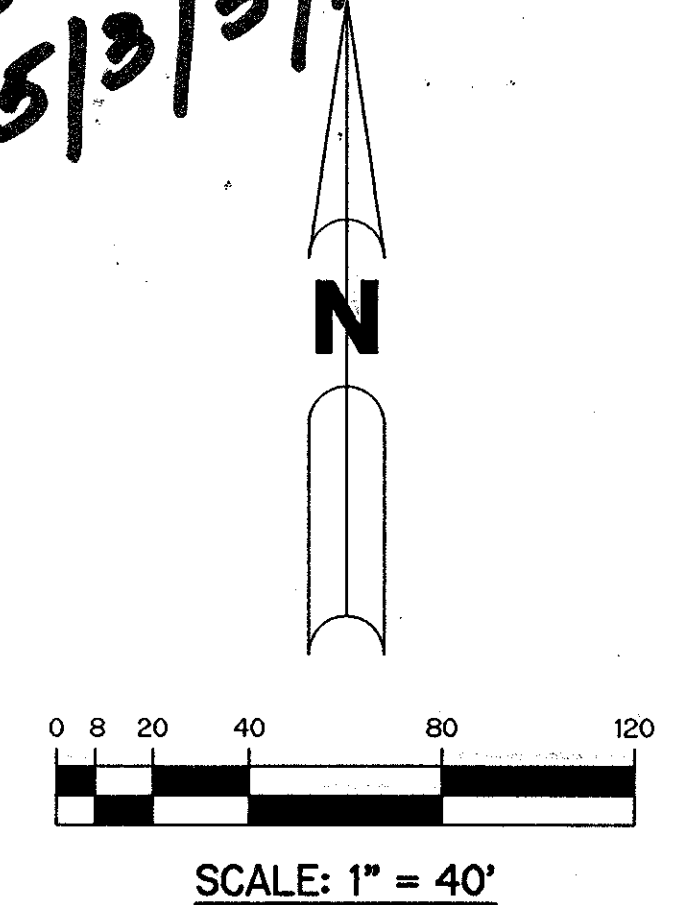
NORTH LINE OF SOUTH 1/2 OF NORTH 1/2 OF NORTHEAST 1/4 OF
NORTHWEST 1/4 OF 26-46-42 (BASED ON FIELD
OCCUPATION AND SECTION BREAKDOWN BY O'BRIEN,
SUITER & O'BRIEN'S BOUNDARY SURVEY
NO. 94-1906, DATED 2/1/94)

UNPLATTED

LIMITS OF PLAT



PET. 94-17
5/3/3/K



TRACT "L1"
WATER MANAGEMENT TRACT
(SHALL BE MAINTAINED BY
ADDISON TRACE COMMUNITY ASSOCIATION, INC.
WITHOUT RECOURSE TO PALM BEACH COUNTY)
SUBJECT TO LITTORAL ZONE RESTRICTIVE COVENANT
4.078 ACRES

MATCH LINE "A"
SEE SHEET 4 OF 5

MATCH LINE "A"
SEE SHEET 4 OF 5

MATCH LINE "A"
SEE SHEET 4 OF 5

SUBDIVISION #
BOOK 80
PAGE 13
FLOOD ZONE 6
ZONING PDD
QUAD # 37
SS
ZIP CODE 33405
PID NAME

- LEGEND:
- - PERMANENT REFERENCE MONUMENT, PLS #4213
 - - PERMANENT CONTROL POINT, PLS #4213
 - Δ - DELTA ANGLE
 - B.E. - BUFFER EASEMENT
 - C.L. - CENTERLINE
 - D.E. - DRAINAGE EASEMENT
 - L - ARC LENGTH
 - L.A.E. - LIMITED ACCESS EASEMENT
 - L.M.A.E. - LAKE MAINTENANCE ACCESS EASEMENT
 - L.M.E. - LAKE MAINTENANCE EASEMENT
 - L.W.D.D. - LAKE WORTH DRAINAGE DISTRICT
 - N.R. - NOT RADIAL
 - N.T. - NOT TANGENT
 - N.T.S. - NOT TO SCALE
 - O.E. - OVERHANG EASEMENT
 - O.R.B. - OFFICIAL RECORD BOOK
 - O.S. - OPEN SPACE
 - P.B. - PLAT BOOK
 - PGS. - PAGES
 - PLS. - PROFESSIONAL LAND SURVEYOR
 - P.S.M. - PROFESSIONAL SURVEYOR AND MAPPER
 - P.U.D. - PLANNED UNIT DEVELOPMENT
 - R - RADIUS
 - R/W - RIGHT-OF-WAY
 - S.T. - SURVEY TIE
 - U.E. - UTILITY EASEMENT
 - P.E. - PEDESTRIAN EASEMENT
 - N 737648.0171
E 905258.2326 - DENOTES STATE PLANE COORDINATES

FAIROAKS HOSPITAL
(UNPLATTED)

THIS INSTRUMENT PREPARED BY
PERRY C. WHITE, P.S.M. 4213, STATE OF FLORIDA
LAWSON, NOBLE AND WEBB, INC.
ENGINEERS PLANNERS SURVEYORS
WEST PALM BEACH, FLORIDA

0671-001

SOUTH 1/4 CORNER
OF 26-46-42
CORNER NOT FOUND

FOUND BRASS DISK
"BEL-AIRE"
N 763554.9310
E 943469.3880

80/128